



New Release:
In-desk mounting

DELLOCK[®]
we move the world

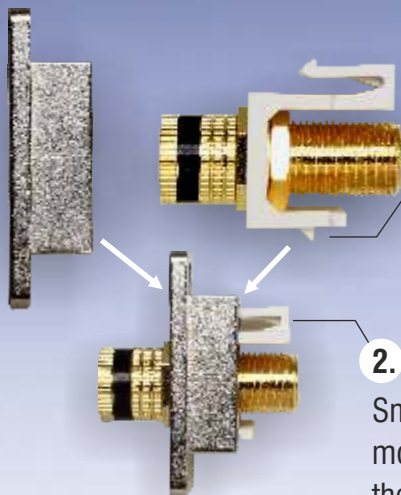


MORE THAN
70 MODULES
COVERS
SURFACE MOUNT BOXES
MOUNTS



THE KEYSTONE SYSTEM

Snap-In mounting · Standardized dimensions
Modules interchangeable · Flexible arrangement



1. Step:
Mount the module with the latch below

2. Step:
Snap-in the module with the hook above

The Delock Keystone system is a modular connector system.

It can be used for many custom applications and is very versatile. There are currently more than 70 modules available - a diversity, which can solve any connection task quickly and easily. For installation in server cabinets and racks there are 10" and 19" patch panel. Keystone brackets for DIN rail can be used for multimedia distribution at home or e.g. be installed in control cabinets.

Snap-In mounting (Keystone module with mounting)

Keystone installation options

Patch Panel and Mounts for walls, floors and table



86277 ● 86276 ○
Keystone Mounting 3 Port in-desk

- 3 Keystone ports 19.2 x 14.8 mm
- Material: plastic
- Mounting diameter: ca. 60 mm
- Mounting depth (with module): ca. 30 mm
- Dimensions: Diameter (total): ca. 71 mm
 Height (total): ca. 23 mm



86280
Keystone Mounting 6 Port for floor tank

- For 6 Keystone modules, easy snap-in mounting
- For mounting in floor tanks
- Suitable only for narrow modules up to 18 mm
- Material: metal
- Dimensions (LxWxH): ca. 175 x 75 x 26 mm



43303
Keystone 10" Wallmount Rack

- For mounting of 10" devices with 1 U (max. 7 cm depth)
- With hinge and cover plate
- Metal case
- Dimensions (LxWxH): ca. 26.4 x 7.6 x 4.4 cm



86273
Keystone 5.25" Multipanel 6 Port

- 6 Keystone ports 19.2 x 14.9 mm
- For 5.25" bay mounting
- Material: Metal panel with plastic brackets
- Dimensions (LxWxH): ca. 146 x 80.2 x 42.2 mm



86281
Keystone Mounting 9 Port for floor tank

- For 9 Keystone modules, easy snap-in mounting
- Dimensions (LxWxH): ca. 218 x 75 x 26 mm



43326 ● 43327 ○
10" Keystone Patch Panel 12 Port

- For mounting in 10" cabinets, 1 U
- Integrated name plate
- Material: metal
- Dimensions (LxWxH): ca. 254 x 43.6 x 9.9 mm



43259 ● 43309 ○
10" Keystone Patch Panel 12 Port

- For mounting in 10" cabinets, 1 U
- Integrated name plate
- Material: Metal panel with plastic front bezel
- Dimensions (LxWxH): ca. 255 x 44 x 12 mm



86274
Keystone Mounting Panel 6 Port for wall

- 6 Keystone ports 19.2 x 14.9 mm
- Integrated name plate
- Two holes with fixing clips, distance 118 mm
- Material: metal
- Dimensions (LxWxH): ca. 130.0 x 29.3 x 19.8 mm



43277 ● 43302 ○
19" Keystone Patch Panel 24 Port with strain relief

- Printed name plate
- Dimensions (LxWxH): ca. 482 x 92 x 44 mm



43278
19" Keystone Patch Panel 24 Port staggered with strain relief

- Printed name plate
- Dimensions (LxWxH): ca. 482 x 93 x 44 mm



Staggered arrangement for low crosstalk



86207 2 Port
 86208 4 Port
 86227 6 Port
 86209 8 Port
 86226
Keystone Surface Mounted Box 1 Port

- Cable routing 180°
- Dimensions (LxWxH): ca. 59 x 35.5 x 28.5 mm

Module: Coaxial

PC

Audio

86350 ● 86300 ○

F female >
F female



86351 ● 86301 ○

BNC female >
BNC female

no
installation
depth



86352 ● 86302 ○

IEC female >
F female



86334
IEC female >
F female

no
installation
depth

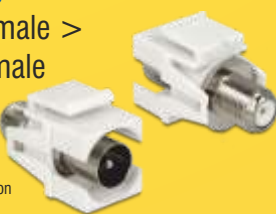


86362
IEC male >
F female



86335
IEC male >
F female

no
installation
depth



86356
RP-SMA female >
RP-SMA female



86365
SMA female >
SMA female



86327 110° 86329 250°
USB 2.0 A female >
USB 2.0 A female
with cable



86328 250° 86326 110°
HDMI female >
HDMI female
with cable



86374 110°
mini Displayport female >
mini Displayport male
with cable



86375 250°
USB 3.0 A female >
USB 3.0 A male
with cable



86367 ● 86317 ○
USB 2.0 A female >
USB 2.0 A female



86366 ● 86316 ○
HDMI female >
HDMI female



86370 ● 86320 ○
USB 2.0 B female >
USB 2.0 A female



Usable in both
directions

86358 ● 86359 ○
HDMI female >
HDMI female
90° angled

NEW



86354 ● 86364 ○
USB 2.0 A female >
USB 2.0 A female
90° angled

NEW



86369 ● 86319 ○
USB 3.0 A female >
USB 3.0 A female



86338
Mini-DIN 4 pin female >
Mini-DIN 4 pin female
gold plated (S-Video)



86360 ● 86361 ○
USB 3.0 A female >
USB 3.0 A female
90° angled

NEW



86339
Mini-DIN 6 pin female >
Mini-DIN 6 pin female
gold plated (PS/2)



86324
FireWire A female 6 pin >
FireWire A female 6 pin



86323
Terminal Block >
Terminal Block



86322 ○ 86336 ● gold plated
Stereo Jack 3.5 mm female >
Stereo Jack 3.5 mm female



86337
TOSLINK female >
TOSLINK female



86305 ● 86306 ◎ 86307 ○
RCA female >
RCA female



86303 ● 86304 ●
Binding post >
Thread nut
gold plated



86308 ● 86309 ◎ 86310 ○
RCA female >
RCA female
gold plated



86333
Keystone cover with
Hex hole for cables
(Set of 4)



Network

86204 Cat.5e 86210 Cat.6

RJ45 female >
RJ45 female



86141 Cat.6 86166 Cat.6A

RJ45 female >
RJ45 female



86154

RJ45 female >
LSA Cat.6



86349 ●

RJ45 Buchse >
LSA Cat.6 UTP



86340 ●

86341 ●

86342 ●

86343 ●

86344 ●

86345 ○

86348

ST Simplex female >
ST Simplex female



86331

SC Simplex female >
SC Simplex female



86346

MTRJ female >
MTRJ female



86347

LC Duplex female >
Multimode female



86168 ● 86198 ○

RJ12 female >
LSA Cat.3



86357

LC Duplex female >
Singlemode female



86390 ● 86380 ○

RJ12 female >
RJ12 female Cat.3



86355

DC 5.5 x 2.1 mm >
solder connector



86315

Keystone cover with
D hole for cables
(Set of 4)



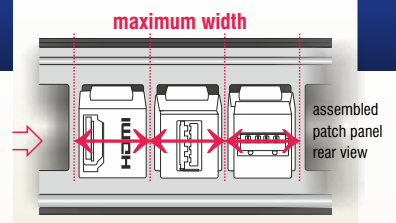
86321 ● 86314 ○

Keystone cover
(Set of 4)



Comment!

Some mountings can only be used with "narrow" modules. The following dimensions (max. width) should be considered when selecting a mounting.



black	white	name	construction height	width
86321	86314	Cover (Set of 4)		16.3
	86315	Cover with D hole for cables (Set of 4)		18.0
	86333	Cover with Hex hole for cables (Set of 4)		16.3
86351	86301	BNC female > BNC female		18.0
	86306+307	RCA female > RCA female		18.0
	86308-310	RCA female > RCA female gold plated	9.5	16.3
	86355	DC 5.5 x 2.1 mm female > solder connector	3.0	16.3
86368	86353	Easy USB 2.0 A female > Easy USB 2.0 A female		17.3
86350	86300	F female > F female	8.1	16.3
	86325	FireWire 4pin > FireWire 4pin		16.8
	86324	FireWire 6pin > FireWire 6pin		16.8
86366	86316	HDMI female > HDMI female		17.4
86358	86359	HDMI female > HDMI female 90°		16.8
	86326+328	HDMI female > HDMI female with cable		16.8
86352	86302	IEC female > F female	10.6	16.3
	86334	IEC female > F female FM		16.8
	86362	IEC male > F female	10.6	16.3
	86335	IEC male > F female FM		16.8
	86322	Stereo Jack 3.5 mm female > female		16.8
	86336	Stereo Jack 3.5 mm female > female gold plated		19.2
	86347+357	LC Duplex female > female		17.8
86374		Mini Displayport female > female with cable		16.8
86338		Mini-DIN 4 pin (S-Video) female > female	8.0	16.0
86339		Mini-DIN 6 pin (PS/2) female > female		16.6
86346		MTRJ female > female		22.0
	86303+304	Binding post > Thread nut	10.3	16.3
86390	86380	RJ12 female > female Cat.3		16.8
86168	86198	RJ12 female > LSA Cat.3		21.0
	86204+210	RJ45 female > female Cat.5e+ Cat.6 compact		15.8
	86141+166	RJ45 female > female Cat.6+ Cat.6A		17.1
	86154	RJ45 female > LSA toolfree Cat.6		18.0
	86340-345	RJ45 female > LSA toolfree Cat.6 UTP		18.1
	86205+405	RJ45 female > LSA toolfree Cat.6A		16.0
	86179+479	RJ45 female > LSA toolfree Cat.6A compact		14.5
	86404	RJ45 Secure Cat.6 > LSA		17.3
	86356	RP-SMA female > RP-SMA female	7.1	16.3
	86331	SC Simplex female > female		22.0
	86365	SMA female > SMA female	7.1	16.3
	86348	ST Simplex female > female	13.6	17.8
	86323	Terminal Block > Terminal Block	5.4	16.8
	86337	Toslink female > female		16.6
86367	86317	USB 2.0 A female > USB 2.0 A female		16.8
86354	86364	USB 2.0 A female > USB 2.0 A female 90°		16.8
	86327+329	USB 2.0 A female > USB 2.0 A female with cable		16.8
86370	86320	USB 2.0 A female > USB 2.0 B female		16.8
86369	86319	USB 3.0 A female > USB 3.0 A female		17.3
86360	86361	USB 3.0 A female > USB 3.0 A female 90°		16.8
86375		USB 3.0 A female > USB 3.0 A male with cable		16.8
43259	43309	10" Patch Panel 12 Port		18.5
43326	43327	10" Patch Panel 12 Port metal		18.0
43277	43302	19" Patch Panel 24 Port		18.5
43278		19" Patch Panel 24 Port staggered		18.5
43280		19" Patch Panel 48 Port 1 HE		*
	86202	Wall Outlet 2 Port		21.5
	86219	Wall Outlet 2 Port compact		14.9
	86194	Wall Outlet 3 Port		18.2
	86212	Mounting 1 Port for DIN rail		17.4
	86232	Mounting 1 Port for DIN rail shielded		17.4
86277	86276	Mounting 3 Port in-desk 60 mm		17.2
86273		Mounting 6 Port for 5.25 PC mounting		23.2
86280		Mounting 6 Port for floor tank		18.0
86268	86218	Mounting 6 Port Multimedia Panel		18.5
86274		Mounting 6 Port Panel Appliance		17.0
86281		Mounting 9 Port for floor tank		18.0
86257	86207	Surface Mounted Box 2 Port		26.0
	86236	Surface Mounted Box 2 Port with dust cover		27.0
	86262	Surface Mounted Box 3 Port closed		25.0
	86208	Surface Mounted Box 4 Port		26.0
	86227	Surface Mounted Box 6 Port		26.0
	86209	Surface Mounted Box 8 Port		26.0
	86172	Surface Mounted Box 12 Port		23.6

* only suitable for 86179+479 and 86205+405

Modules

Mounts

Keystone accessories

Useful tool for connecting module and cable

Connect a network cable quickly and easily to the RJ45 Keystone module 86205 or 86179. The single wires need to be pre-assembled in the module, then the module is inserted in the tool and pressed. Thereby all the wires are simultaneously contacted and the excess cable ends are cut off.



86211 Crimping Tool for 86205 and 86179

- Metal pliers with plastic handles and lock
- Tool interchangeable
- Bag dimensions (LxWxH): ca. 22.5 x 17 x 5.5 cm

86205 RJ45 female > LSA Cat.6A



86405 Set of 24

NEW



86179 RJ45 female > LSA Cat.6A compact



86479 Set of 24

NEW



43280 19" Keystone Patch Panel 48 Port with strain relief

- Printed name plate
- For 86205 and 86179
- Dimensions (LxWxH): ca. 482 x 150 x 44 mm



Secure with system

The new **Delock Secure RJ45 module** with integrated security mechanism has two functions:

- 1 The socket can be **blocked** and secured from unauthorized use.
- 2 The patch cable can be and secured **interlocked** and is protected against removal.



For locking and unlocking the separately available tool **86411** is required.



86404 Keystone Module RJ45 Secure Cat.6 > LSA

- Shielded (Cat.6)
- Dimensions (LxWxH): ca. 38.5 x 22.3 x 17.3 mm

86411 Keystone Tool RJ45 Secure

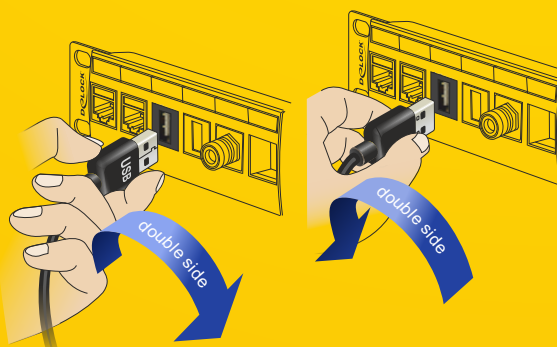
- Dimensions (LxWxH): ca. 80.5 x 23 x 11 mm



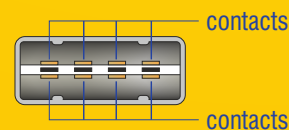
Easy USB 2.0 A



The **EASY USB** socket is different to the usual 4 pin socket because it has **8 pins**. The benefit is that a USB plug can be plugged in the EASY USB socket in both directions.



A USB 2.0 socket with **8 pins** instead of conventional 4 Pins



86353 ● 86368 ○ EASY-USB 2.0 A female > EASY-USB 2.0 A female



The Keystone House

Quelle: www.sweethome3d.com / www.creative-3d.net



1 86219 Keystone Wall Outlet 2 Port compact

- 45° angle of Keystone modules
- Dust covers
- Integrated name plate
- Mounting holes 60 mm
- Colour: pure white RAL 9010
- Design suitable central plate 50 x 50 mm
- Dimensions (LxWxH): 80 x 80 x 25.7 mm



NEW

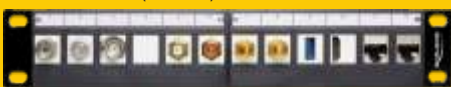
2 86262 Keystone Surface Mounted Box 3 Port

- Cable routing 90°, 180°, 270° or in-wall
- Dust cover for the Keystone ports and connected cables
- Cable restraints for the connected cables
- Colour: pure white RAL 9010
- Dimensions (LxWxH): ca. 120 x 82 x 31 mm



3 43259 ● 43309 ○ 10" Keystone Patch Panel 12 Port

- For mounting in 10" cabinets
- Metal panel with plastic front bezel
- Integrated name plate
- Dimensions (LxWxH): ca. 255 x 44 x 12 mm



4 86212 Keystone Mounting for DIN rail 1 Port

- Mounting for 35 mm DIN rail
- Integrated name plate
- Stackable
- Dimensions (LxWxH): 78.5 x 65 x 18 mm



86232

Keystone Mounting for DIN rail shielded 1 Port

- Same as item 86212
- Sheet metal for grounding Keystones with metal housing to the DIN rail

5 86272 Cover for Keystone DIN rail Mounting

- Cover can be used as an end plate for the Delock Keystone DIN rail mounts 86212 and 86232
- Dimensions (LxWxH): ca. 74.8 x 65.1 x 1.5 mm

6 86268 ● 86218 ○ Keystone Multimedia Panel 6 Port

- For mounting on tables, furniture or walls
- 45° angled keystone panel
- Integrated name plate
- Dimensions (LxWxH): ca. 130 x 65 x 49 mm



7 86202 Keystone Wall Outlet 2 Port

- 40° angle of Keystone modules
- Dust covers
- Integrated name plate
- Colour: pure white RAL 9010
- Mounting holes 60 mm
- Dimensions (LxWxH): ca. 80 x 80 x 23.6 mm



86194

Keystone Wall Outlet 3 Port compact

- 45° angle of Keystone modules
- Dust covers
- Integrated name plate
- Mounting holes 60 mm
- Design suitable central plate 50 x 50 mm
- Colour: pure white RAL 9010
- Dimensions (LxWxH): 80 x 80 x 25.8 mm



NEW

8 86213 / 86413 Set of 4 Keystone Mounting for enclosures 1 Port

- Panel Cut-out (WxH): 22.8 x 16.8 mm
- Material: die cast zinc
- Dimensions (LxWxH): ca. 35.5 x 19.1 x 9.8 mm



86275

Keystone Mounting 1 Port for D-type

- 1 Keystone Port 19.2 x 14.9 mm
- Panel cut-out (diameter): ca. 23.6 mm
- Two mounting holes for screws, spacing 30.6 mm, with M3 thread
- Dimensions (LxWxH): 31 x 26 x 9.8 mm



NEW

example



Keystone modules and panel not included!

More detailed information about our products can be found at

www.delock.com

The items offered are available while stocks last. All logos and trademarks are the property of their respective owners. Specifications, delivery times and errors reserved.

EN 167701 247

