

SLIMPORT / MyDP +++

THUNDERBOLT |||

EASY USB ○○○

M.2 NGFF ○○○

aptX® Bluetooth Music Receiver >>>

NEW

## Bluetooth Music Receiver aptX®

Item 27168

### Excellent HiFi sound in CD-quality

The sound quality of previous bluetooth receivers were restricted by decoding and encoding of MP3 or AAC signals. With its new aptX Codec the 27168 offers the needed technic for reaching an adequate sound volume in nearly loss-free quality.



■ Perfect sound by interaction of aptX® Codec and digital/analog converter WM8524G from Wolfson®

■ Digital connection via TOSLINK or analog by RCA to stereo system, active speaker or PC

■ Connection via Bluetooth by Smartphone, Tablet PC or notebook

NEW



- Line out analog: 3.5 mm jack (stereo)
- Optical out digital: TOSLINK (S/PDIF)
- Supports aptX®
- Supports Bluetooth profile A2DP
- Supports SBC Codec
- Class 2, operation range up to 10 meter
- Dimensions (Ø x H): ca. 96.5 x 23.0 mm

### How do you define sound?

Optimal sound volumen  
convincing

with aptX®  
via bluetooth  
unique ...

aptX® >>>

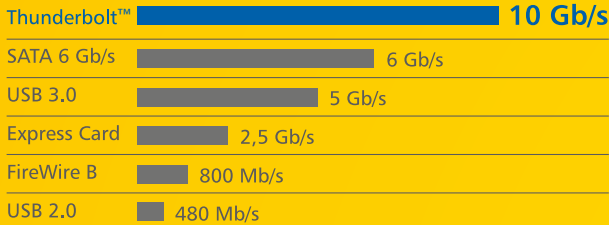
Bluetooth Music Receiver

# THUNDERBOLT

# THE INTERFACE for PC & Mac

**Thunderbolt™** is the multifunctional interface by Intel® which integrates PCI Express and Displayport in one connector. Besides the data transfer it also supports the transfer of video signals outside the graphic card interface. Thereby the Thunderbolt interface reaches a maximum data transfer rate of up to 10 Gb/s and is 12 x faster than FireWire 800 and twice as much as USB 3.0.

## Performance comparison



## **NEW** 2.5" External Enclosure SATA HDD to Thunderbolt™ (up to 15 mm HDD)

- Chipset: Asmedia
- 1 x Thunderbolt™ female external, 1 x DC jack external
- 1 x 22 pin SATA 6 Gb/s female internal
- Suitable for 2.5" SATA HDD / SSD:
  - HDD height up to 15 mm
  - SATA HDD / SSD up to 6 Gb/s
  - HDD / SSD up to 2 TB
  - support DC 12 V / 5 V HDD / SSD
- LED indicator for power and access
- Self-powered (works only with power supply)
- Dimensions (LxWxH): ca. 139 x 80 x 21 mm
- Hot Swap, Plug & Play

for  
PC & Mac

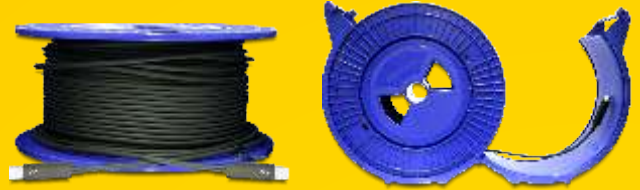


Item 42490  
black



Item. 42510  
silver

## Optical Thunderbolt™ cables in different lengths



Item 83257 10 m    Item 83258 20 m    Item 83259 30 m

## Cable Thunderbolt™ male / male

Chipset: Intel®



Item 83165 0,5 m  
Item 83166 1,0 m  
Item 83167 2,0 m  
Item 83168 3,0 m

Item 83154 0,5 m  
Item 83149 1,0 m  
Item 83150 2,0 m  
Item 83151 3,0 m

## Converter Thunderbolt™ to SATA 6 Gb/s

Item 61971

- Chipset: Asmedia
- 1 x Thunderbolt™ female
- 1 x DC jack
- 1 x 22 pin SATA 6 Gb/s female
- For SATA HDD, SATA SSD
- LED indicator for power and access
- Self-powered (works only with power supply)
- Dimensions (LxWxH): ca. 80 x 70 x 21 mm



# SLIMPORT / MyDP

This Delock adaptor with **SlimPort / MyDP** (mobility displayport) - a combination of USB and Displayport of the newest smartphones enables you to watch your photos or videos from your smartphone in HD quality on a display or projector. Additionally there is a standard micro USB female jack on the backside. Simply connect your smartphone PSU to supply your device with power while you are playing videos for instance.



Item 65551

**Adapter  
SlimPort / MyDP male >  
VGA female + Micro USB female**

- Compatible to Google LG Optimus G Pro, LG G2
- Chipset: ANX 7732
- Supports resolution up to 1080p, 1920 x 1080 (by 60 Hz)
- Voltage: 5 V via Micro USB female port
- Cable length: ca. 20 cm (incl. connector)



Item 65468

**Adapter  
SlimPort / MyDP male >  
High Speed HDMI female +  
USB micro B female**

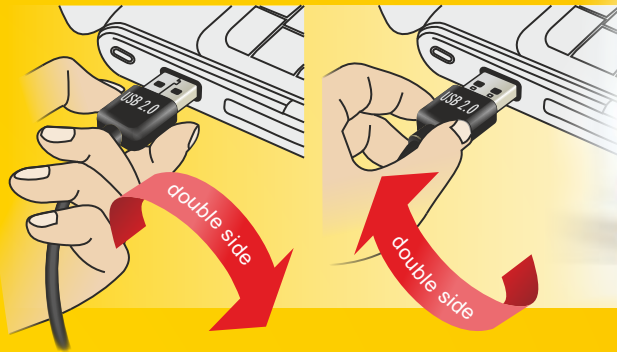
- Compatible to Google Nexus 4, Google LG Optimus G Pro, LG G2, Fujitsu Stylistic QH582, Asus PadFone Infinity
- Chipset: Analogix
- Supports a resolution up to 1080p
- Voltage: 5 V via USB micro B female port
- Cable length: ca. 15 cm (incl. connector)

## EASY USB 2.0

**USB 2.0 connector with 8 pins instead of common 4 pins**



Compared to standard USB connector with 4 pins the EASY USB connector is with 8 pins. This allows to connect it in both ways into a usual USB port.



**Cable**  
EASY USB 2.0 A male >  
USB 2.0 mini male

- Item 83362 1 m
- Item 83363 2 m
- Item 83364 3 m
- Item 83365 5 m



**Cable**  
EASY USB 2.0 A male >  
USB 2.0 micro B male

- Item 83366 1 m
- Item 83367 2 m
- Item 83368 3 m
- Item 83369 5 m



**Cable**  
EASY USB 2.0 A male >  
USB 2.0 B male

- Item 83358 1 m
- Item 83359 2 m
- Item 83360 3 m
- Item 83361 5 m



**Cable**  
EASY USB 2.0 A male  
angled 90° >  
USB 2.0 micro B male

- Item 83382 1 m
- Item 83383 2 m
- Item 83384 3 m
- Item 83385 5 m



**Cable**  
EASY USB 2.0 A male  
angled 90° >  
USB 2.0 B male

- Item 83374 1 m
- Item 83375 2 m
- Item 83376 3 m
- Item 83377 5 m



**Cable**  
EASY USB 2.0 A male  
angled 90° >  
USB 2.0 mini male

- Item 83378 1 m
- Item 83379 2 m
- Item 83380 3 m
- Item 83381 5 m



**Cable**  
EASY USB 2.0 A male >  
EASY USB 2.0 A male  
angled 90°

- Item 83464 1 m
- Item 83465 2 m
- Item 83466 3 m
- Item 83467 5 m



**Cable**  
EASY USB 2.0 A male >  
EASY USB 2.0 A male

- Item 83460 1 m
- Item 83461 2 m
- Item 83462 3 m
- Item 83463 5 m



**Adapter**  
EASY USB 2.0 A male >  
USB 2.0 A female  
angled up / down

Item 65521



**Adapter**  
EASY USB 2.0 A male >  
USB 2.0 A female  
angled left / right

Item 65522



**Adapter**  
EASY USB 2.0 A male >  
USB 2.0 A female

Item 65520



**Extension cable**  
EASY USB 2.0 A male >  
USB 2.0 A female

- Item 83370 1 m
- Item 83371 2 m
- Item 83372 3 m
- Item 83373 5 m

**NEW**



Item 91730

**Card Reader Micro USB OTG +  
1 x USB Port**

- 1 x Micro USB type B male
- 1 x USB A female
- 1 x SD / SDHC / MS / MMC Slot
- 1 x Micro SD Slot
- Chipset: MA8170
- Dimensions (LxWxH): ca. 51.5 x 30.5 x 9.4 mm

Item 91731

**Card Reader Micro USB OTG + USB A male**

- 1 x Micro USB type B male
- 1 x USB type A male
- 1 x SD / SDHC / MS / MMC Slot
- 1 x Micro SD Slot
- Chipset: MA8170
- Dimensions (LxWxH): ca. 55.2 x 28.7 x 9.2 mm

**NEW**



**NEW**

Item 91732

**Card Reader Micro USB OTG 6 Slots**

- 1 x Micro USB type B
- 1 x SD / SDHC / MMC Slot
- 1 x Micro SD Slot
- 1 x xD Slot
- Chipset: IT1338E
- Dimensions (LxWxH): ca. 101.5 x 27 x 15 mm
- Cable length: ca. 155 mm (incl. Micro USB male)
- 1 x M2 Slot
- 1 x CF Slot
- 1 x MS Slot



# M.2 NGFF

## Next Generation Form Factor

### M.2 NGFF male



M.2 NGFF SSDs support the new M.2 standard and allow higher data transfer rates. Another advantage is the even smaller construction height enabling the installation of this SSD in ultrabooks and tablet PCs or using it as boot device for embedded systems because of its low power consumption. M.2 NGFF interface the follower of miniPCIe and mSATA, is already existing in many new notebooks and tablet PCs.

Delock offers converters and adapters for converting other interfaces to M.2 NGFF.

### Item 62521 Converter SATA 22 pin > M.2 NGFF



This Delock converter enables you to connect a M.2 NGFF SSD in 2260, 2242 and 2230 format which can be used as a 2.5" HDD. The converter can be installed into your system internally through an SATA 22 pin interface.

- SATA 22 pin male > M.2 NGFF key B slot
- Interface: SATA
- Suitable for M.2 NGFF modules in format 2260, 2242 and 2230 with key B or key B+M based on SATA
- Bootable

### Item 62517 Adapter M.2 NGFF > SATA 7 pin



This adapter converts the M.2 NGFF interface into a SATA 7 pin interface. Thus you can e.g. connect SATA SSDs to the M.2 NGFF interface.

- M.2 NGFF key B+M male > SATA 7 pin female
- Interface: SATA
- Form factor: M.2 NGFF 2260
- Suitable for M.2 NGFF connector with key B or key M

**NEW**

### Item 62544 Converter 2.5" SATA 22 Pin > M.2 NGFF

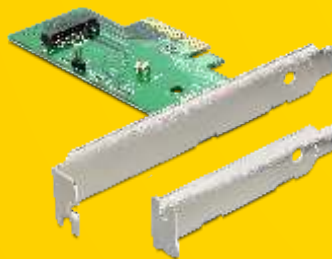


This converter enables you to connect a M.2 NGFF SSD in 2280, 2260, 2242 and 2230 format which can be used as a 2.5" HDD.

- SATA 22 pin male > M.2 NGFF key B slot
- Interface: SATA
- Form factor: 2.5"
- Supports M.2 NGFF modules in 2280, 2260, 2242 and 2230 format with key B or key B+M based on SATA
- Bootable

**NEW**

### Item 89370 PCI Express Card > 1 x internal M.2 NGFF



The PCI Express card expands your PC by one M.2 NGFF slot. You can connect one M.2 NGFF SSD in 2280, 2260 and 2242 format.

- Connectors:
  - 1 x 67 pin M.2 NGFF key M slot
  - 1 x PCI Express x4, V3.0
  - 1 x LED pin header
- Interface: PCIe
- Supports M.2 NGFF modules in 2280, 2260 and 2242 format with key M or key B+M based on PCIe

## SSD

Item 54617

**32 GB**  
42 mm



Item 54618

**64 GB**  
60 mm



Item 54619

**128 GB**  
80 mm



Item 54621

**256 GB**  
80 mm

